

MICRO SWITCH
a Honeywell Division

FED. MFG. CODE 91 929

SWITCH-BASIC

CATALOG LISTING
V7-9W1AE9

CW-C6310

CATALOG LISTING

V7-9W1AE9

ISSUE

5

CMH

CHECK

05APR10

REPLACES X94555-V7

RELEASE NO. PR-19303

05APR10

REPLACES X94555-V7

05APR10

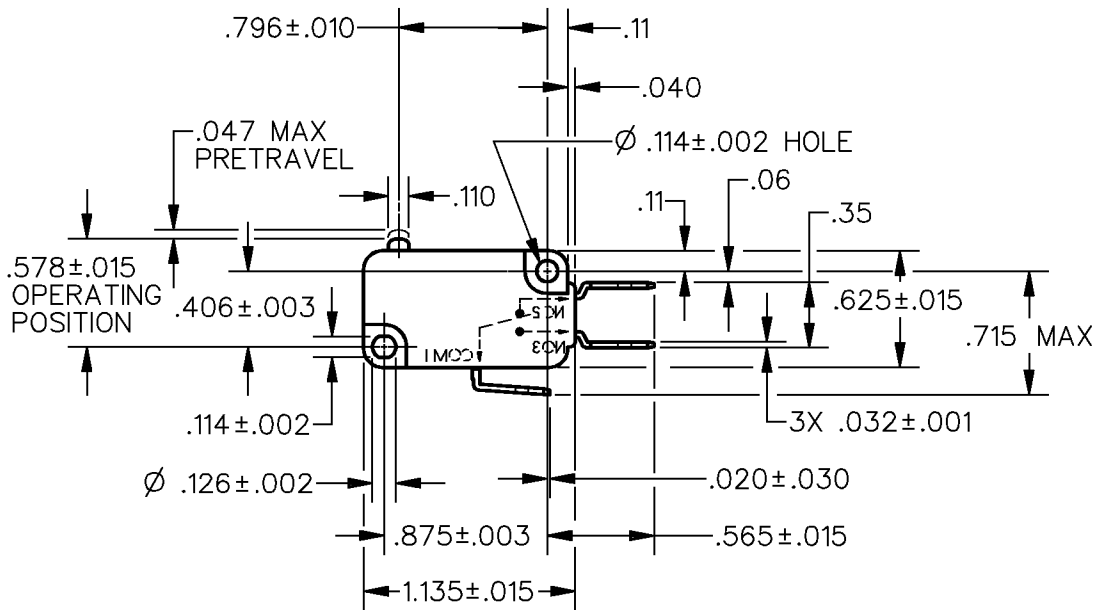
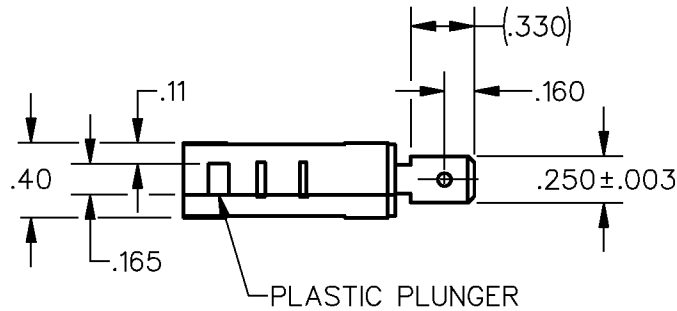
REPLACES X94555-V7

05APR10

REPLACES X94555-V7

05APR10

REPLACES X94555-V7



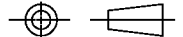
NOTES

- 1 - MAXIMUM MECHANICAL DEAD BREAK OF .0025 CAN BE EXPECTED WITH THIS SWITCH CONSTRUCTION
- 2 - SILVER PLATED TERMINALS
- 3 - SWITCH WILL FUNCTION A MINIMUM OF 1000 ACTUATIONS AT RATED LOAD WHILE EXPOSED TO A 350°F ENVIRONMENT FOR 600 HOURS

ANSI Y14.5M-1982 APPLIES

THIS DRAWING COVERS A PROPRIETARY ITEM AND IS THE PROPERTY OF MICRO SWITCH, A DIVISION OF HONEYWELL. THIS DRAWING IS NOT TO BE COPIED OR USED WITHOUT THE APPROVAL OF MICRO SWITCH.

THIRD ANGLE PROJECTION



CHARACTERISTICS

OPERATING FORCE— — —300 GRAMS MAX
 RELEASE FORCE— — —25 GRAMS MIN
 DIFFERENTIAL TRAVEL— — —.010 MAX
 OVERTRAVEL— — —.050 MIN
 FREE POSITION— — —.630 MAX
 RELEASE TRAVEL— — —.010 MIN

ELECTRICAL DATA

CONTACT ARRANGEMENT
S P D T

L264

15.1A 125, 250, 277 VAC

SCALE FULL

DO NOT SCALE PRINT

UNLESS OTHERWISE SPECIFIED TOLERANCES ARE

ONE PLACE (.0) ±.030

TWO PLACE (.00) ±.015

THREE PLACE (.000) ±.005

ANGLES ± -

WEIGHT



RASTER

DRAWN

B A B 22 JUL 91

CHECK

L A D 24 JUL 91